

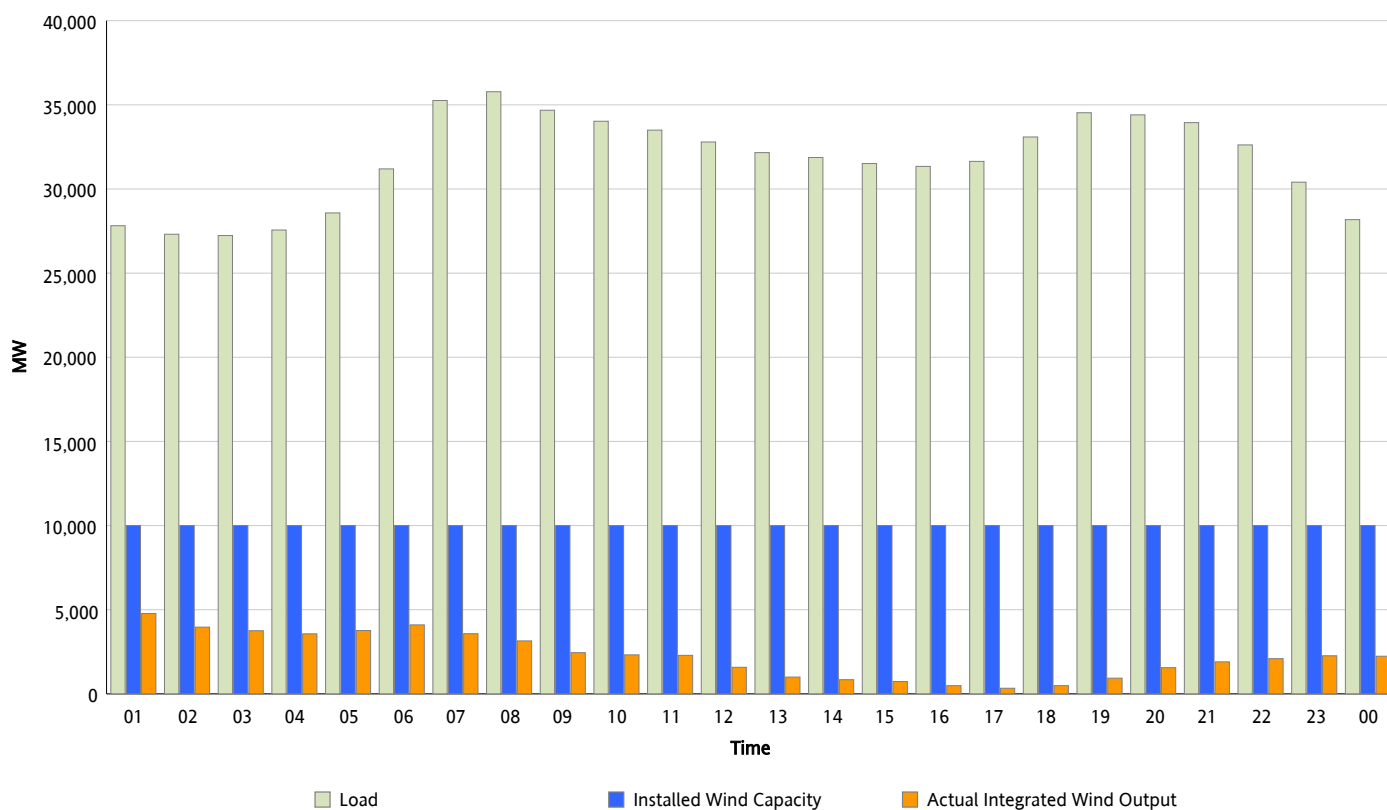


ERCOT Grid Operations

Wind Integration Report : 11/15/2012

Peak Load	35,777 MW
Load Peak Hour (HE)	08
Wind Over Peak	3,148 MW
Wind Record 11/10/12	8,521 MW
Max Wind Value*	5,135 MW
Wind Peak Time	00:00
Wind Integration %	18.2 %

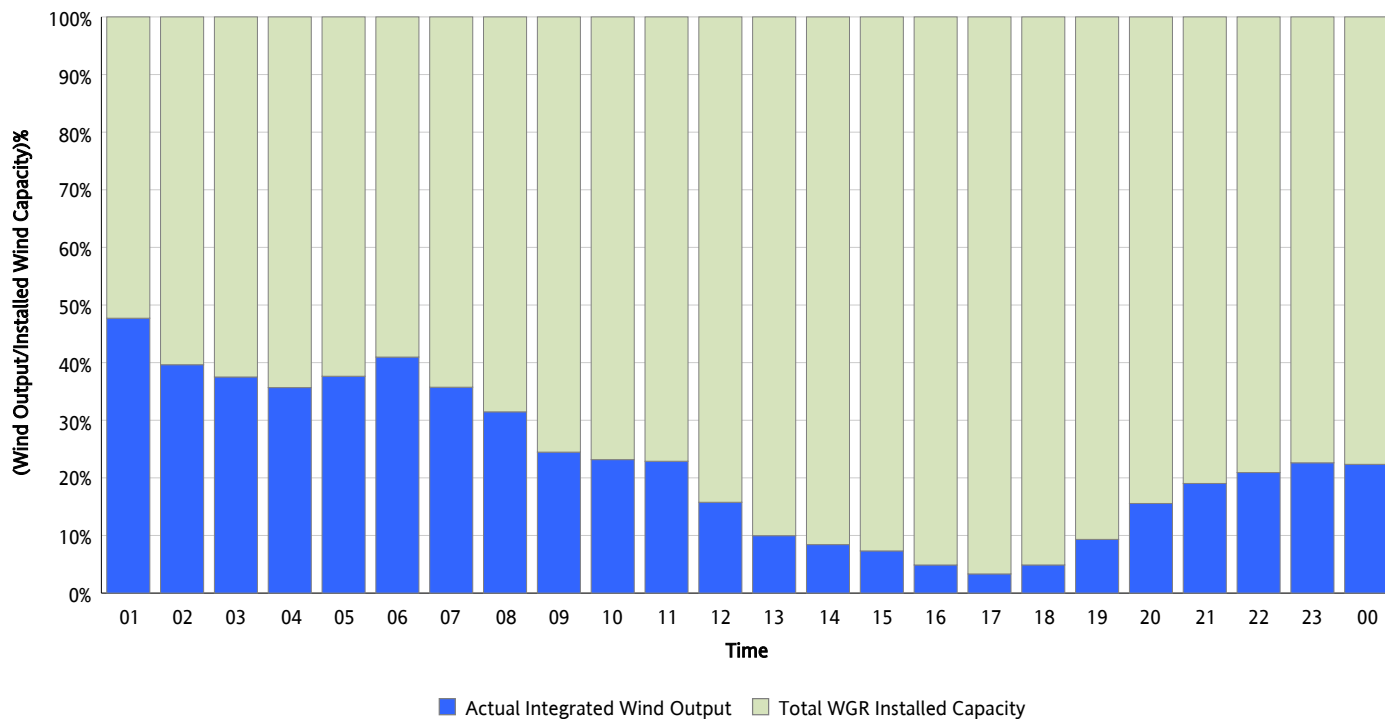
Hourly Average Actual Load vs. Actual Wind Output
11/15/2012



* Wind Record and Wind Max represent instantaneous values and the rest of the values are integrated over the hour

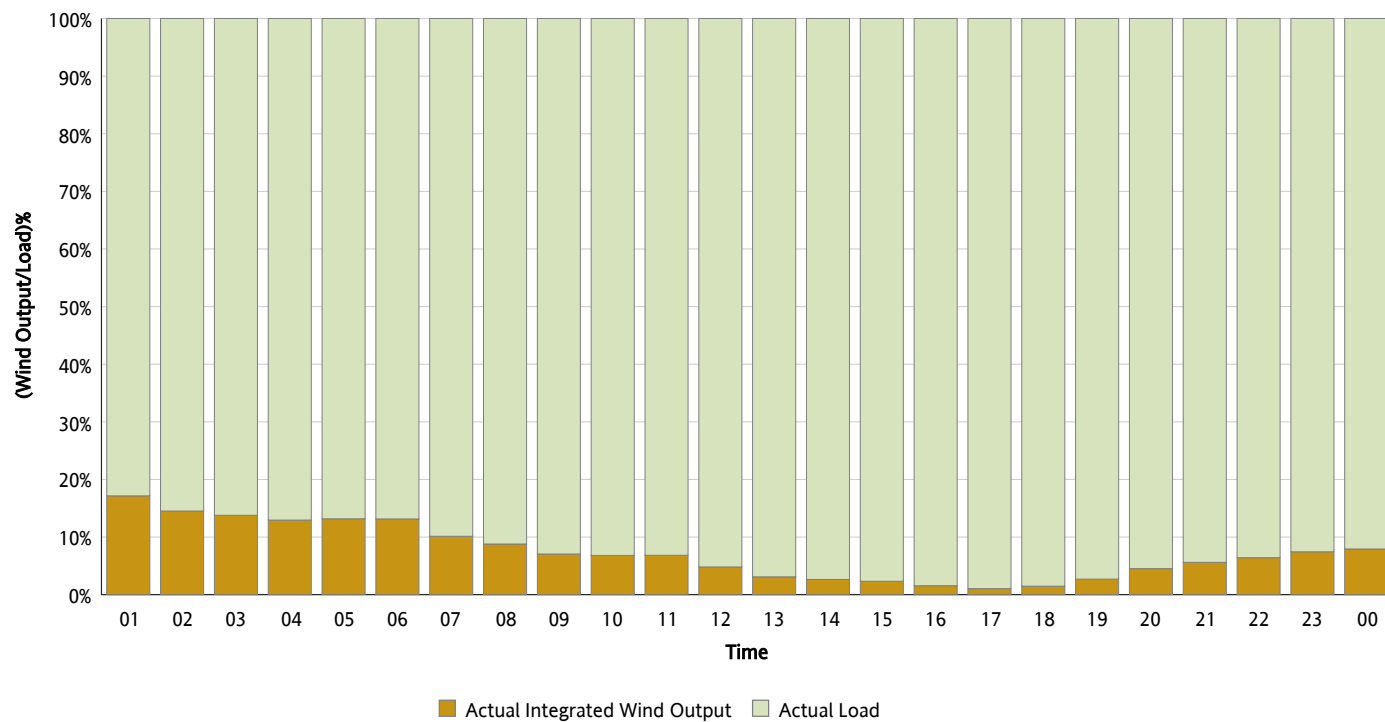
Actual Wind Output as a Percentage of the Total Installed Wind Capacity

11/15/2012



Actual Wind Output as a Percentage of the ERCOT Load

11/15/2012



ERCOT Load vs. Actual Wind Output

11/08/2012 - 11/15/2012

